



Power UP

Agile Implications for Resource Management

September 14, 2017



RMI is dedicated to the advancement of resource and workforce management thought leadership, best practices and standards, globally recognized credentials that certify resource and workforce management expertise, and tools and resources necessary for effective and efficient management of human capital intensive businesses.

The RMI will provide the RM community a vehicle to advance the discipline of RM, and further the interests of the people who make up the RM community and the companies they work for.

Innovate

Collaborate

Educate



RMI Power UP: Agile - Implications for RM
Join us for the next 30-minute Power UP session to discuss implications of Agile for Resource Management.
[Read More →](#)

RM Community



Find tools and information to solve problems, improve performance, and stay on top of your game.
[Read More →](#)

Become an RMCP@



Specifically designed for resource managers, RMCP@ promotes and supports competency development for resource management (RM) professionals.
[Read More →](#)

RM Classes



RMI offers resource management classes and certification for Professional/Consulting Services organizations and Internal IT Operations.
[Read More →](#)

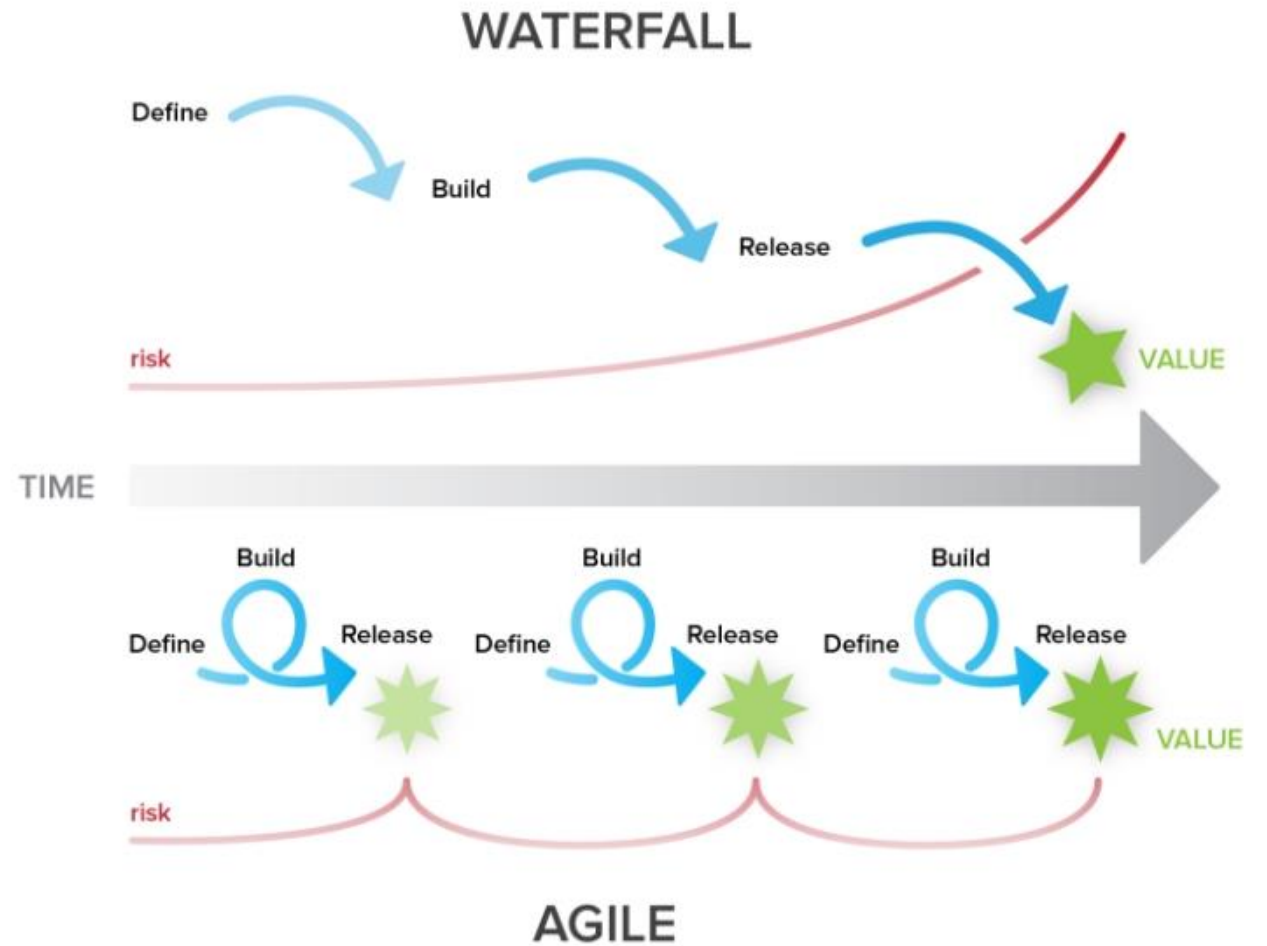
What is Agile?

- It is a set of values and principles through which solutions to evolve through the collaborative effort of self-organizing cross functional teams
- Agile itself is an umbrella term for various agile methods that have been defined over the years
- Scrum (most popular), Kanban, Lean, XP, Crystal, DSDM...



What is Agile?

The objective of the approach is getting to the same end point: business value, but the path to getting there is different.



What Makes it Different?

- Product vs. Project
- Projects structured as a series of smaller iterations/sprints
- Resource allocations may be different
- Shorter, more dynamic planning cycle
- Black box work environment

An agile approach to delivery employs less rigorous planning, which provides resource managers with less insight and predictability around staff allocation and productivity.

Just-in-Time Resourcing®

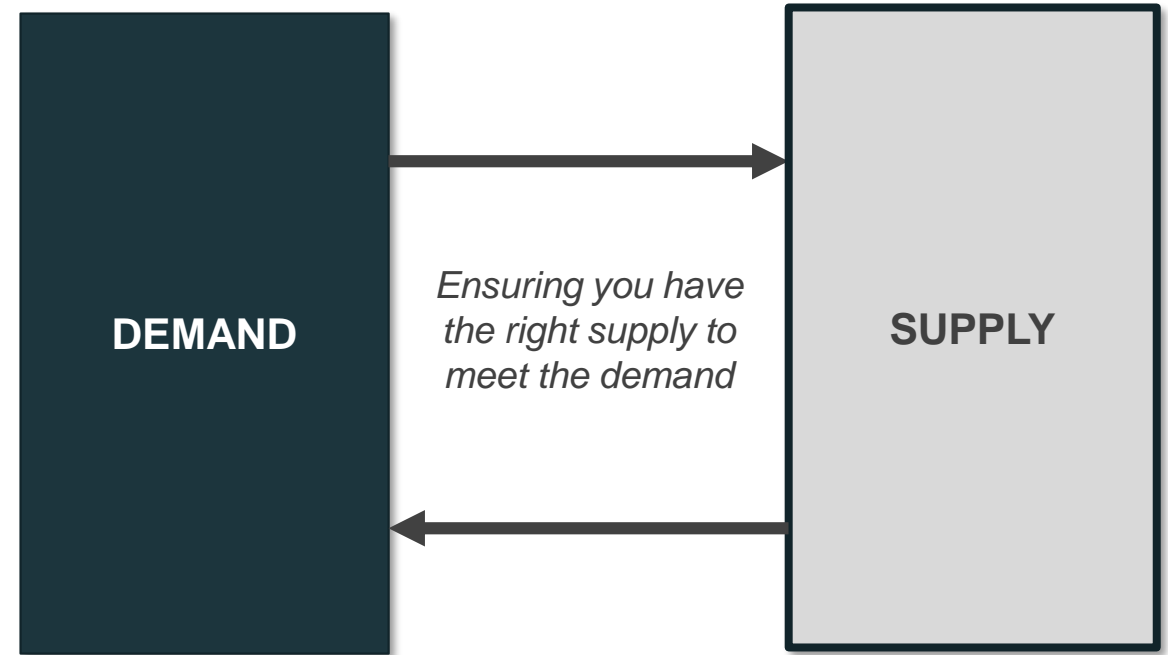


Predictable and
Effective Resource
Management Requires
Robust Process
Support

Right Person, Right Place, Right Time!

Focus on RM Fundamentals

- ✓ Know your Supply
- ✓ Know your Demand



Do not let Supply dictate the Demand

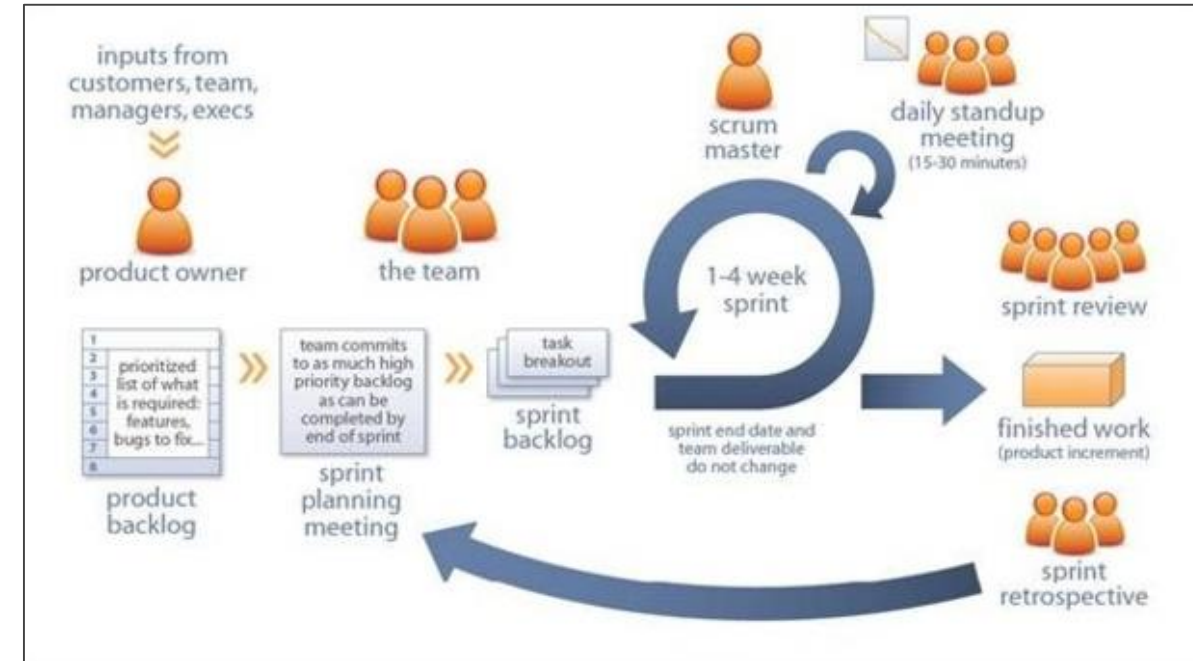
Know your Supply

- Have a normalized, manageable set of roles and roles names
- A functioning and well-maintained skills database
- RM alignment and mapping: ensure you have proper RM coverage for every team

Maintain resource transparency

Know your Demand

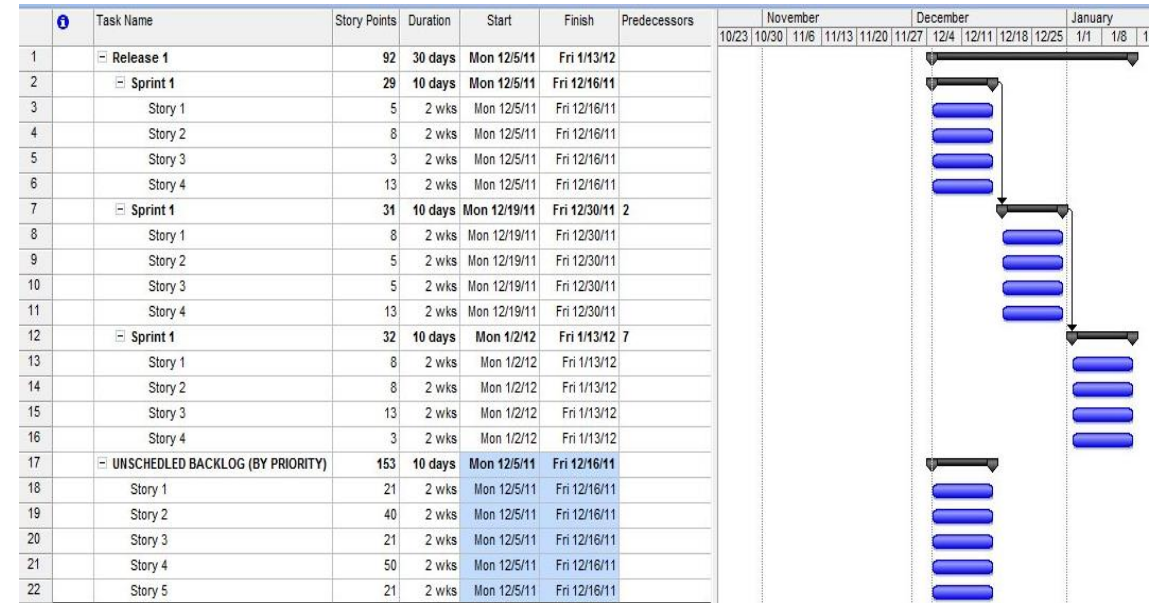
- The solution (product) is the thing
- A project may serve many masters (customers, business owners)
- Forecasting more difficult. The objective is “directionally correct”.



Remember, these are still Projects

Staffing Assignments

- Once you are open to defining demand differently, assignments are more manageable
- Govern that assignments hold and reduce switching
- Stability will support better capacity planning by role, skill or function



Conclusion

- Agile delivery methods are here to stay, and are expanding into other project based work
- While agile delivery does pose challenges for effective RM, it is doable
- Don't let delivery change the fundamentals of resource management



Resource Management Certified Professional (RMCP)[®]

First-of-its-kind certified professional skills development program for:

Resource Managers

Learn Best Practices

Gain Access to RMCP[®] Resource Center

Collaborate with Industry Peers



RMCP® Overview

- Prerequisite study
- 3-day classroom or 6-week online instructor led sessions (2 hrs. each)
- Interactive lectures, case study workshops
- Certification exam
- Re-certification process

- Pricing: \$1,595 per person*
- Student pays travel expenses
- Materials and testing fee included
- Earn PDUs for your PMI Certifications
 - 16.25 PDUs for in class version
 - 13.25 PDUs for online version

*Price subject to change. Volume pricing available upon request.



Just-in-Time Resourcing®

Next RMCP® Programs

Cincinnati, OH
October 3-5

Sold Out!

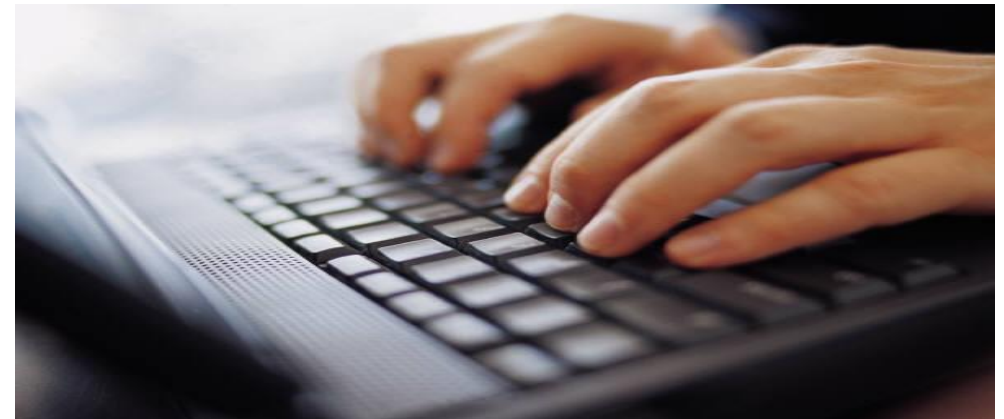


Cincinnati, OH
January 23-25

*\$1,495 early bird pricing
through December 23*

Online
Sessions Start Nov. 14

*\$1,495 early bird pricing
through October 14*



Apply today at:
<http://resourcemanagementinstitute.com/apply/>



THANK YOU

Resource Management Institute

855-786-2555 Ext. 509

Info@ResourceManagementInstitute.com